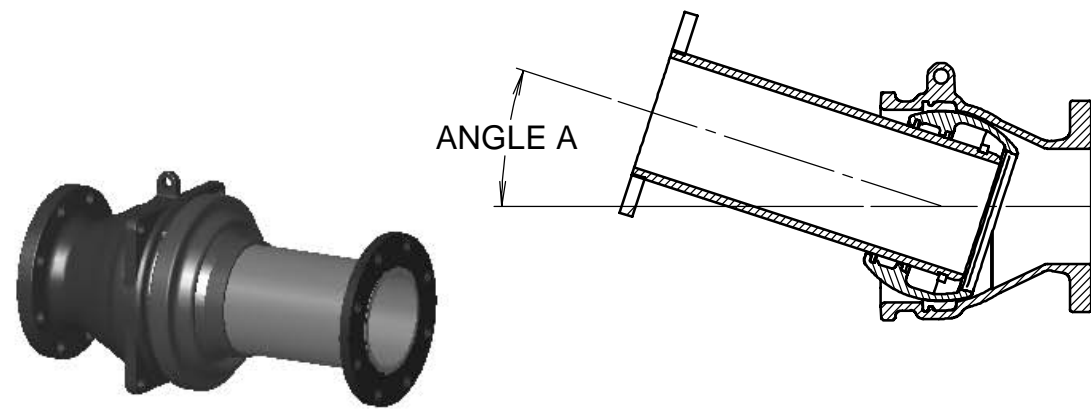


B2120-B

PART NO.	QTY.	NAME	DESCRIPTION
1	1	CASING	AVAILABLE FLANGED OR MJ END. ASTM A536 DUCTILE IRON. FLANGE DRILL PER CLS 150. MJ END PER C110.
2	1	CASING COVER	ETHYLENE PROPYLENE DIENE METHYLENE (EPDM) RUBBER
3	1	CASING GASKET	ETHYLENE PROPYLENE DIENE METHYLENE (EPDM) RUBBER
4	1	LOCKRING	TYPE 400 SERIES STAINLESS STEEL
5	1	BALL GASKET	ETHYLENE PROPYLENE DIENE METHYLENE (EPDM) RUBBER
6	1	SLEEVE	AVAILABLE FLANGED OR PLAIN END. ASTM A536 DUCTILE IRON. FLANGE DRILLING PER CLS 150.

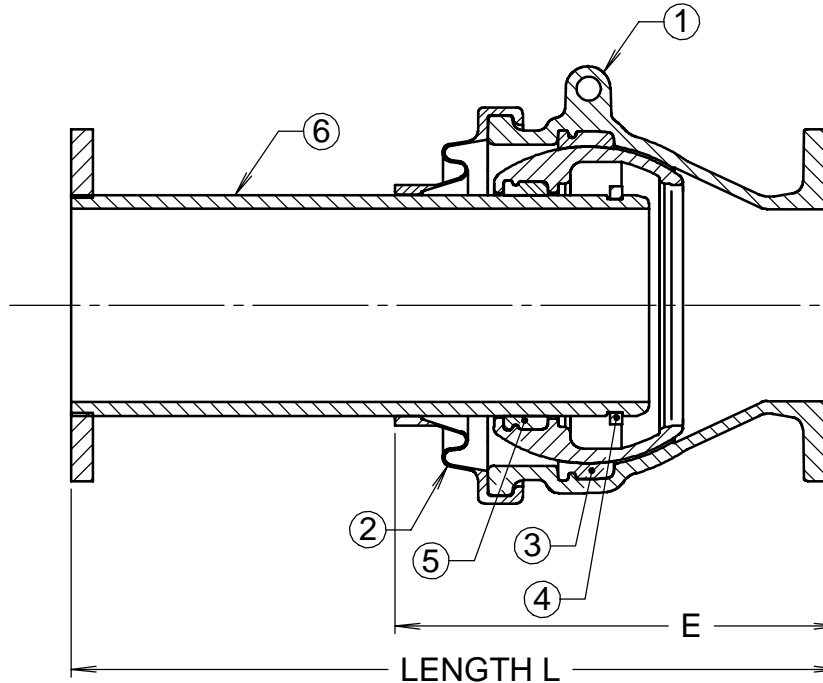
DIMENSIONS									
SIZE	A	B	C	D	E*	EXPANSION	MAX. PRESS.	L (SEE NOTE 1)	
3	20.0°	8.3	5.7	11.9	12.0	2.00	350	24	36
4	19.0°	9.4	6.3	13.2	13.5	2.00	350	24	36
6	18.0°	11.9	7.4	15.6	13.0	3.13	350	24	36
8	17.0°	14.4	8.7	18.1	16.0	3.13	300	24	36
10	16.0°	16.9	10.1	20.7	17.5	3.13	300	24	36
12	15.0°	19.4	11.3	23.7	19.0	3.94	250	24	36

*SEE NOTE 3

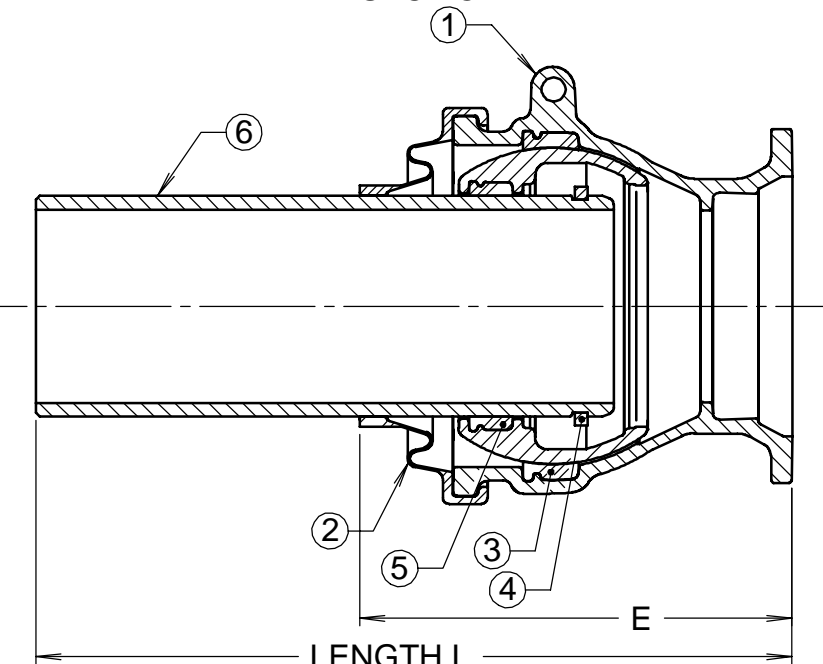


- NOTE:
1. FLEXIJOINT CAN BE SUPPLIED WITH EITHER LENGTH.
 2. COATING: LINED AND COATED WITH FUSION BONDED EPOXY, APPLIED AND TESTED IN ACCORDANCE WITH AWWA C213.
 3. LENGTH "E" VARIES: CASING COVER SLIDES ON SLEEVE.
 4. END THRUST MUST BE ACCOMMODATED IN DESIGN OF PIPING SYSTEMS. THE THRUST AT THE FLEXIJOINT WILL BE IN PROPORTION TO THE PRESSURE APPLIED IN THE SYSTEM. SEE THE TABLE BELOW FOR AREA AND TYPICAL THRUST LOADS.

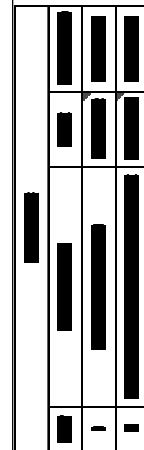
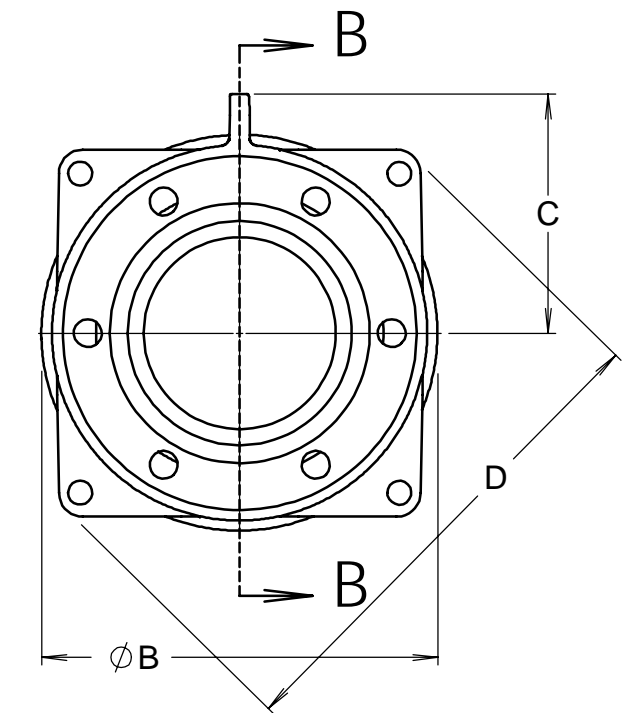
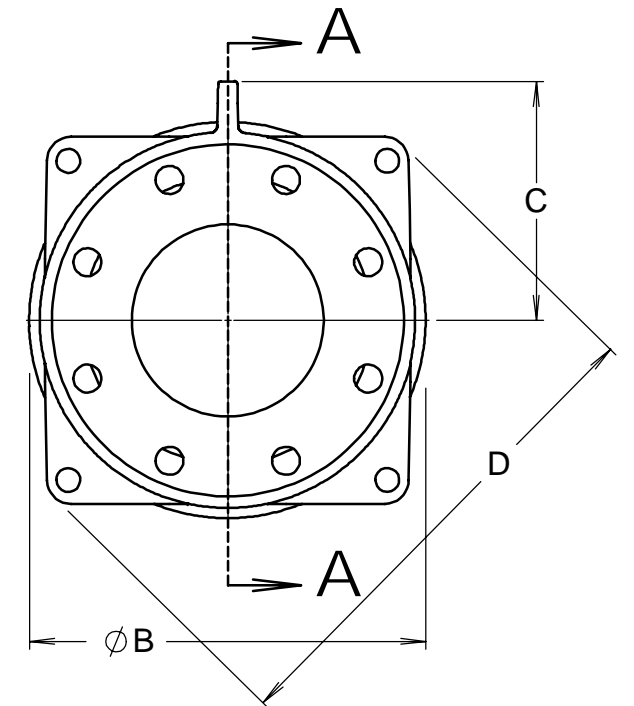
SIZE	CROSS-SECT. DIA.	AREA (in ²)	THRUST (lbs.)		
			50 psi	100 psi	150 psi
3"	Ø3.96	12.32	616	1,232	1,847
4"	Ø4.80	18.10	905	1,810	2,714
6"	Ø6.90	37.39	1,870	3,739	5,609
8"	Ø9.05	64.33	3,216	6,433	9,649
10"	Ø11.10	96.77	4,838	9,677	14,515
12"	Ø13.20	136.85	6,842	13,685	20,527




LENGTH L
SECTION A-A



LENGTH L
SECTION B-B



THIS DRAWING CONTAINS CONFIDENTIAL PROPRIETARY INFORMATION AND IS THE PROPERTY OF ROMAC IND. INC. IT IS TO BE USED ONLY FOR THE PURPOSE FOR WHICH IT IS SUBMITTED AND SHALL NOT HAVE ITS INFORMATION DISCLOSED OR REPRODUCED IN WHOLE OR IN PART FOR ANY PURPOSE WITHOUT PRIOR WRITTEN PERMISSION OF ROMAC IND. INC.

UNLESS OTHERWISE SPECIFIED	SIGNATURES		ROMAC IND. INC., SEATTLE, WA
DIMENSIONS ARE IN INCHES	DRWN CHECKED		TITLE FLEXIJOINT, SINGLE BALL, 3" - 12"
		SIZE B	DWG. NO. B2120-B
		SCALE NTS	REV. NO. 1
		SHEET 1 OF 1	