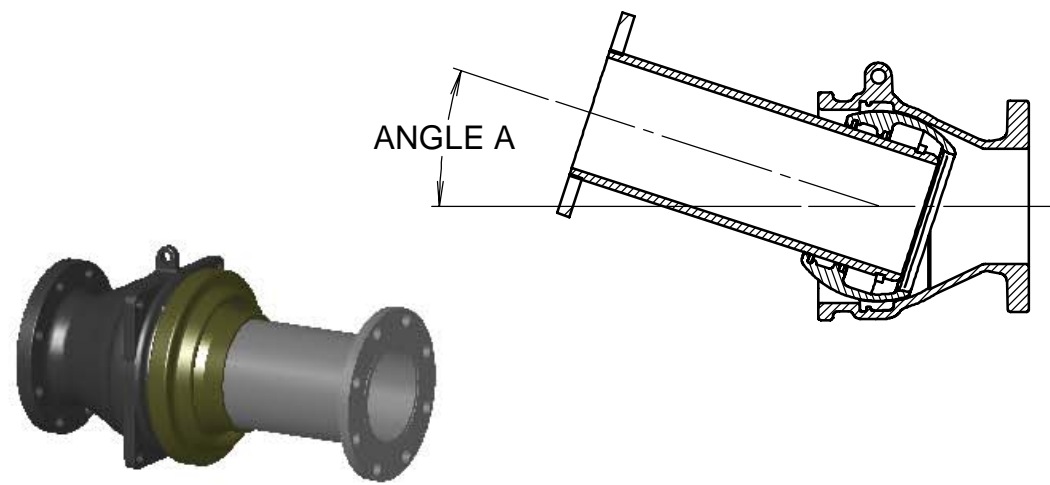
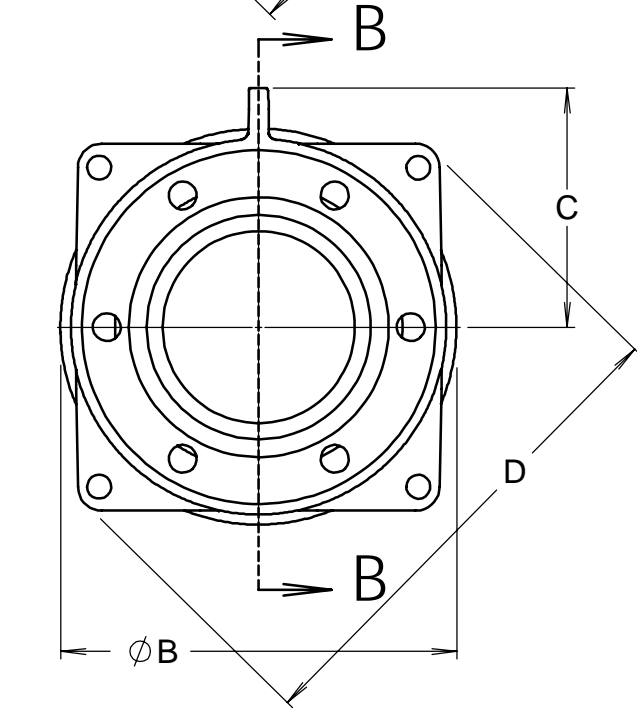
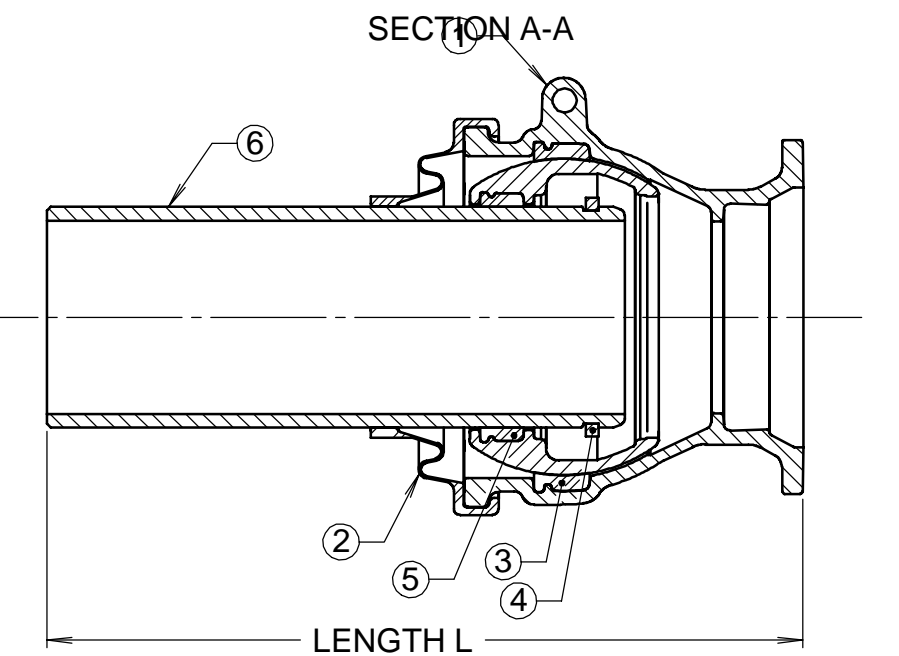
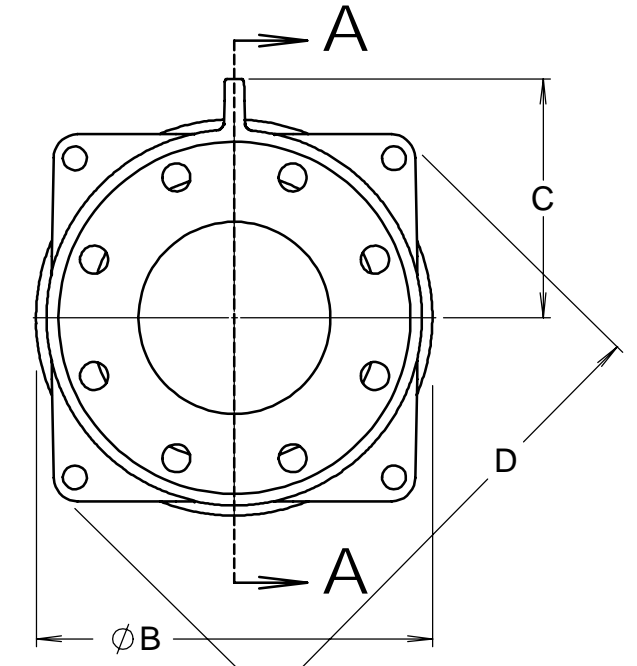
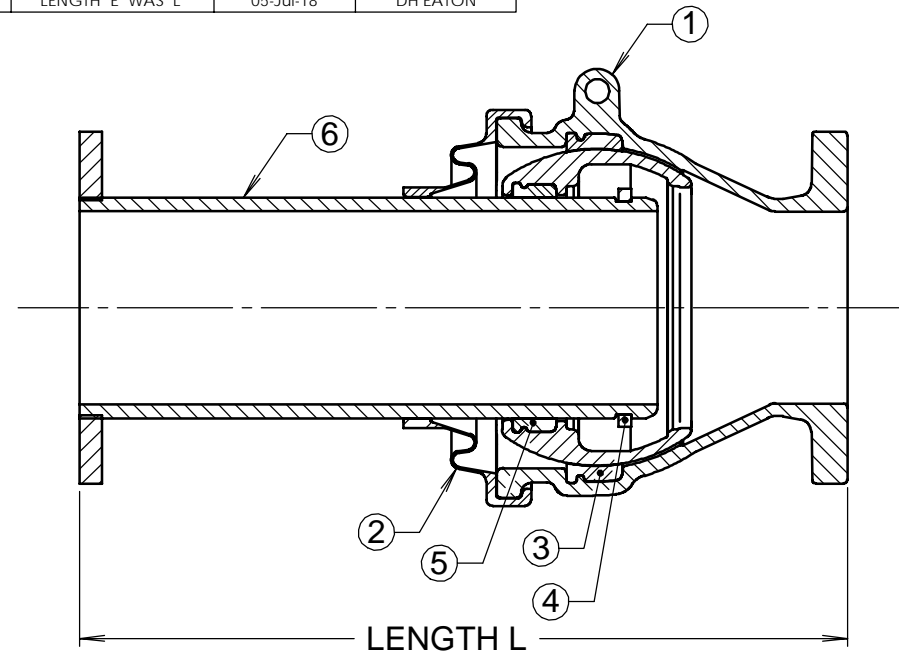


PART NO.	QTY.	NAME	DESCRIPTION
1	1	CASING	AVAILABLE FLANGED OR MJ END. ASTM A536 DUCTILE IRON. FLANGE DRILL PER CLS 150. MJ END PER C110.
2	1	CASING COVER	ETHYLENE PROPYLENE DIENE METHYLENE (EPDM) RUBBER
3	1	CASING GASKET	ETHYLENE PROPYLENE DIENE METHYLENE (EPDM) RUBBER
4	1	LOCKRING	TYPE 400 SERIES STAINLESS STEEL
5	1	BALL GASKET	ETHYLENE PROPYLENE DIENE METHYLENE (EPDM) RUBBER
6	1	SLEEVE	AVAILABLE FLANGED OR PLAIN END. ASTM A536 DUCTILE IRON. FLANGE DRILLING PER CLS 150.

DIMENSIONS								
SIZE	A	B	C	D	EXPANSION	MAX. PRESS.	L (SEE NOTE 1)	
14	15.0°	21.7	12.7	26.2	3.94	350 psi	24	36
16	15.0°	24.1	14.0	28.6	4.72	350 psi	24	36
18	15.0°	26.3	15.1	30.9	4.72	350 psi	24	36
20	15.0°	29.2	16.9	34.3	5.91	350 psi	-	36
24	15.0°	34.7	19.7	39.4	5.91	350 psi	-	36



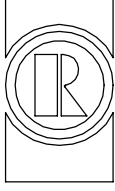
REVISIONS			
REV.	DESCRIPTION	DATE	APPROVED
1	LENGTH "E" WAS "L"	05-Jul-18	DH EATON



- NOTE:
- FLEXIJOBT CAN BE SUPPLIED WITH EITHER LENGTH.
  - COATING: LINED AND COATED WITH FUSION BONDED EPOXY, APPLIED AND TESTED IN ACCORDANCE WITH AWWA C213.
  - LENGTH "L" VARIES: CASING COVER SLIDES ON SLEEVE.

1

THIS DRAWING CONTAINS CONFIDENTIAL PROPRIETARY INFORMATION AND IS THE PROPERTY OF ROMAC IND. INC. IT IS TO BE USED ONLY FOR THE PURPOSE FOR WHICH IT IS SUBMITTED AND SHALL NOT HAVE ITS INFORMATION DISCLOSED OR REPRODUCED IN WHOLE OR IN PART FOR ANY PURPOSE WITHOUT PRIOR WRITTEN PERMISSION OF ROMAC IND. INC.

UNLESS OTHERWISE SPECIFIED	SIGNATURES		ROMAC IND. INC., SEATTLE, WA	
DIMENSIONS ARE IN INCHES	DRAWN  CHECKED		TITLE FLEXIJOBT, SINGLE BALL, 14" - 24"	
		SIZE B	DWG. NO. B2277-B	REV. NO. -
		SCALE NTS	SHEET 1 OF 1	

